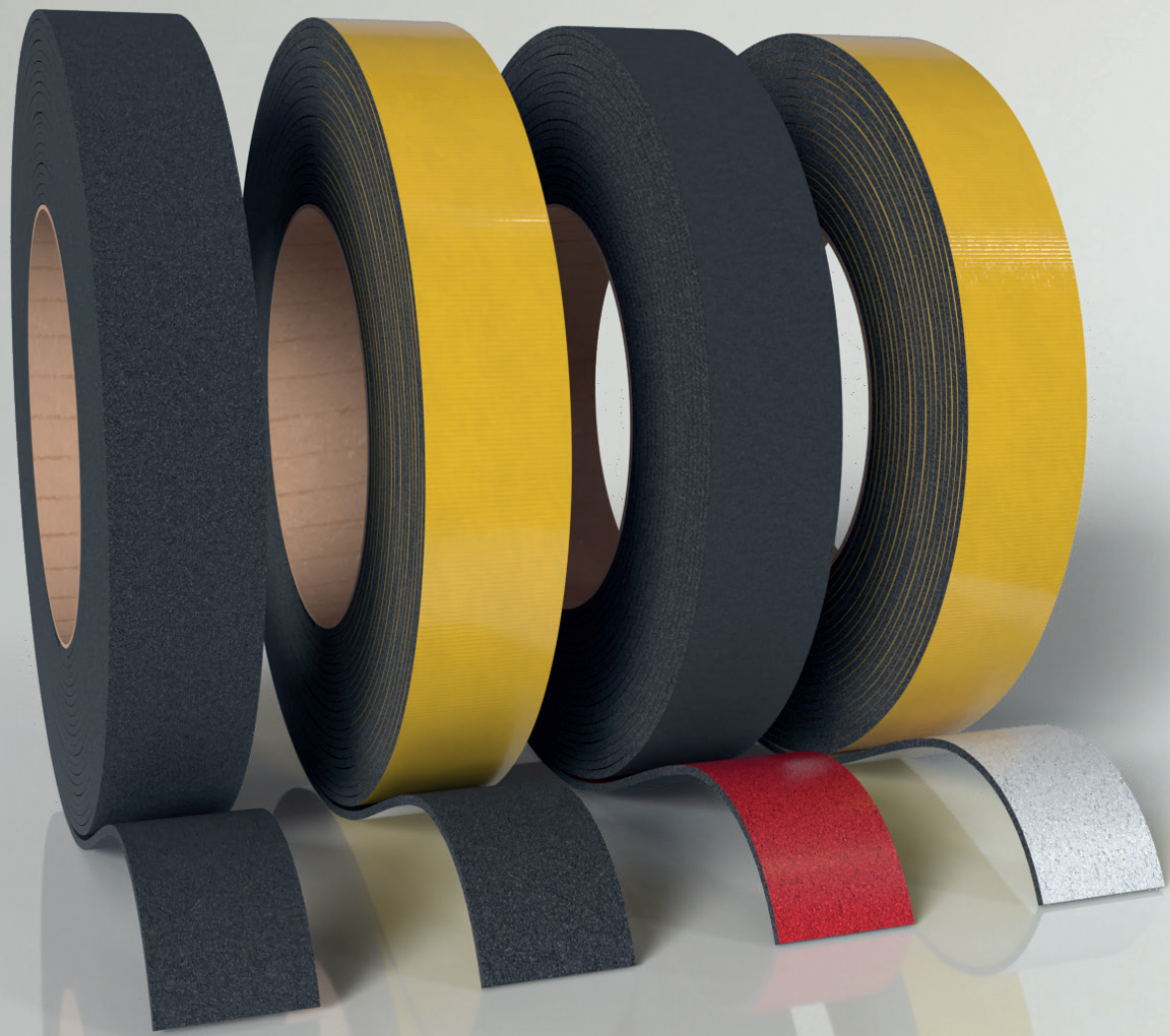


Technical Product Data Sheet

KERAFIX®

Flexpan 200 NG-A



kuhnodice

Tech.Rev.: 1.1
Ling. Rev.: 1.1

Product description

KERAFIX® Flexpan 200 NG-A is a high-quality, intumescent material based on expandable graphite. It has been developed to meet the highest standards of fire protection.

A feature of the material is its ability to form a stable, pressurised foam body when exposed to heat, providing an effective barrier against fire and smoke.

The material begins to react at around 175 °C, at which point it expands to 37 times its original volume. With a bulk density of approximately 1200 kg/m³ and a high level of insensitivity to moisture, KERAFIX® Flexpan 200 NG-A is extremely robust and durable.

It is used in a wide range of construction applications including fire protection doors made from steel, aluminium and wood, facades and safety storage cabinets. It is also used in dry lining applications such as inspection flaps or partition wall and ceiling structures.

Reaction to fire

- Class E (DIN EN 13501-1)

Properties

- Very good expansion properties at high temperatures
- High temperature resistance
- Insensitive to moisture
- Free from halogens and substances that are hazardous to health
- Versatile and suitable for use in a wide range of construction applications
- Highly adaptable and flexible
- Simple and quick installation

Fields of application

- Fire protection doors made from wood, steel or aluminium
- Special fields of application for doors such as lock case insulation and hinges
- Facades
- Safety storage cabinets
- Control cabinets
- Inspection flaps
- Partition wall and ceiling structures
- Thermal insulation in buildings
- Frames
- Fire-rated glazing systems
- Ventilation systems
- Cable and pipe penetration seals
- Elevator shafts
- Escape and rescue routes
- Electrical and mechanical ducts

Technical data

Verification	ETA-15/0719: 02 December 2015
Composition	Expandable graphite-based foaming material that is free from halogens, asbestos and conflict minerals. Compliant with REACH, RoHS and VOC and UV-resistant
Material structure	Flexible roll material
Volatile components (VOC) [g/l]	None
Thermal conductivity [W/(m×K)]	0.247
Thermal conductivity reference temp. [°C]	10
Shore A hardness	83.4
Bulk density [kg/m ³]	1200 (±10 %)
Start of reaction [°C]	175
Expansion rate [x times]	22 – 37
Reference expansion rate	450 °C – 30 min. – without superimposed load
Intumescent layer	Soft, cohesive material
Expansion pressure [N/mm ²]	0.6 – 1.3
Reference expansion pressure	300 °C – method 4
Direction of expansion	Three-dimensional
Storage	In the original package at 18 – 25 °C and normal humidity (50 – 70 %)
Shelf life (SK variant)	Can be stored for six to twelve months from the delivery date

Design variants

KERAFIX® Flexpan 200 NG-A without additional lamination

SK variant: self-adhesive on one side

DF variant: laminated with PVC film in different colours on one side

Other design variants available on request.



Colour variants

Black, white, red

Processing information

1. Surface preparation:

- The surface to which the KERAFIX® Flexpan 200 NG-A is to be applied must be clean, dry and free from dust, grease or other dirt to ensure optimum adhesion.
- Thorough cleaning is particularly important when using the product on smooth surfaces.

2. Application temperature:

- The recommended application temperature is between +5 °C and +35 °C. This temperature range ensures the optimal material adhesion. It also ensures that the intumescent properties of the material can be fully utilised when exposed to fire.

3. Application:

- When using self-adhesive variants (such as the SK variant), the protective film should be removed just before installation.
- After removing the protective film, press the product down firmly to ensure durable and even adhesion. Even pressure along the entire length of the profile is required for the best possible adhesion.

4. Positioning:

- Since the material adheres with pressure, it should be positioned precisely. Corrections following application are difficult and could have a negative effect on adhesion.

Delivery forms

Standard lengths [mm]	25,000 and 50,000
Standard widths [mm]	Up to 320
Standard thicknesses [mm]	1.5 and 2.0 (special thicknesses available upon request)

All cuts (length × width) are produced in accordance with the general tolerance DIN ISO 2768-1-c.

All moulded parts and punched parts are produced in accordance with the general tolerance DIN 7715-5-p2.



Contact:

KuhnOdice Germany GmbH

Jägersgrund 10
57339 Erndtebrück
Germany
+49 2753 5945-0

KuhnOdice France S.A.S.

Z.A.E. Les Dix Muids
685 Rue Antoine Laurent Lavoisier
59770 Marly
FRANCE
+33 3 27 19 32 32

KuhnOdice UK

5 – 6 Lansil Way,
Lansil Industrial Estate,
Caton Road, Lancaster, LA1 3QY
United Kingdom
01524 406088

info@kuhnodice.com

kuhnodice.com