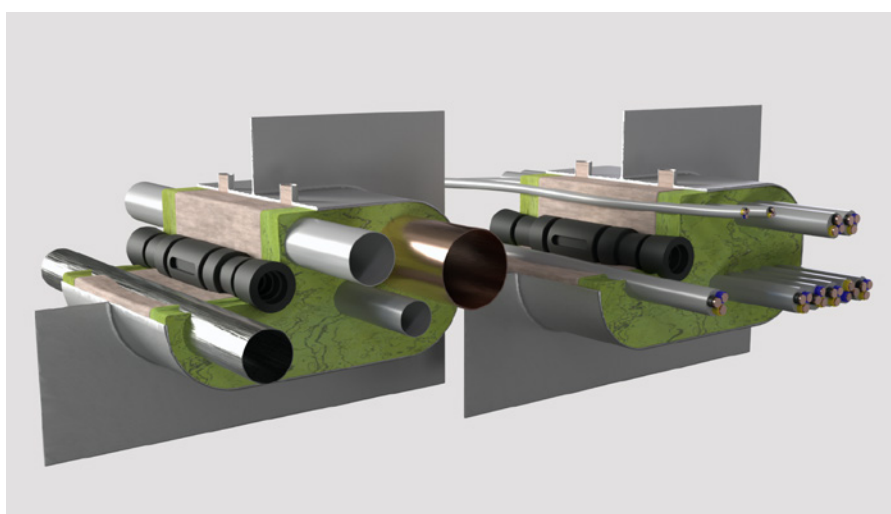


GEAQUELLO® E 950

Cable and pipe penetration system



For the shipbuilding industry, KuhnOdice offers the proven GEAQUELLO® E 950 cable and pipe penetration sealing system, which was developed more than 60 years ago for ship types with the highest fire protection requirements. The system can be easily installed in new ships, as well as during repairs. GEAQUELLO® E 950 is certified by the marine classification society and has also been tested for shock and vibration resistance.

Pillars for safety

Sealing compound, retaining modules and impregnation fluid are the basic components for quick and easy installation of cable and pipe penetrations. In addition, special modules ensure the hassle-free retrofitting of cables and pipes.



GEAQUELLO® E 950
Sealing compound



GEAQUELLO® R 312/R 380
Retaining modules



GEAQUELLO® E 824
Impregnation fluid



GEAQUELLO® E 234
Retrofit modules

Calculation made easy

The GEAQUELLO® E 950 system also offers benefits in terms of logistics.
The calculation process is extremely simple, as the following examples illustrate:

Calculation for cable penetration

Dimensions:

Bulkhead: Max: 800 × 300 × 230 mm Deck: Max: 800 × 300 × 205 mm
Min: 102 × 102 × 230 mm Min: 90 × 90 × 205 mm

Quantities (with 30% fill of cables):

$$\text{E 950 (kg)} = \frac{(\text{sealing length}) \text{ cm} \times (\text{width}) \text{ cm} \times (\text{height}) \text{ cm} \times 0.7}{1,000}$$

The cable filling rate is up to 72.7 % (E 950 sealing compound 27.3 %)

R 380: 1 R 380 stripe = 1 kg E 950 E 824: 5 R 380 stripes = 1 kg E 824

Calculation for pipe penetration

Dimensions:

Bulkhead: Max: 500 × 250 × 230 mm Deck: Max: 500 × 250 × 205 mm
Min: 102 × 102 × 230 mm Min: 89 × 90 × 205 mm

Quantities (with 30% fill of pipes):

$$\text{E 950 (kg)} = \frac{(\text{sealing length}) \text{ cm} \times (\text{width}) \text{ cm} \times (\text{height}) \text{ cm} \times 0.7}{1,000}$$

The pipe filling is unlimited

R 380: 1 R 380 stripe = 1 kg E 950 E 824: 5 R 380 stripes = 1 kg E 824



Further information
and technical data sheets